

# TIPPARADE



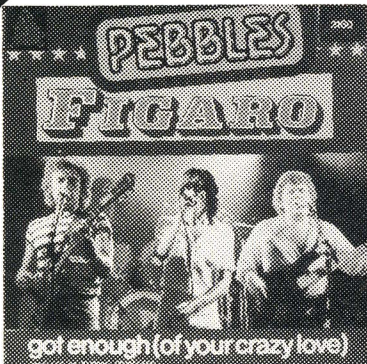
## ALARMSCHIJF



**DE DO DO DO DE DA  
DA DA - the police**  
ams 9110 - cbs

- 2 26 **CELEBRATION - kool and the gang**  
(deodato) bell/kool/the gang - 101 372, inelco-vip
- 3 6 **COME CLOSER - renee**  
(bert ruiter) anja and rené Nodelijk - 141 677 - cnr
- 4 5 **TUNNEL OF LOVE - dire straits - (j. lovine/  
knopfler) knopfler - vertigo 6059 350 - phonogram**
- 5 7 **DROMENLAND - mieke (dries holten)**  
giegel/griffioen/ten hoopen - 4390 - dureco
- 6 9 **SOMETIMES - spargo**  
(steve yeick ellert driessen - 9569 - inelco-vip
- 7 8 **I'M GONNA BE STRONG - blue angel (roy halee)**  
barry mann/cynthia weil 2095 316 - polydor
- 8 10 **SHINE UP - doris d and the pins**  
(souer) janschen & janschens - 6017 117, phon./ut.
- 9 13 **NO FOR AN ANSWER - golden earring**  
(kooymans) kooymans/hay - 2002 015 - polydor
- 10 12 **TASTE OF BITTER LOVE - gladys knight/the pips**  
(n. ashford/v. simpson) idem 8890 - cbs
- 11 14 **BANANA REPUBLIC - boomtown rats**  
(visconti) briquette/geldof - 6059 367 - phonogr.
- 12 17 **RUNAWAY BOYS - stray cats**  
(d. edmunds) setzer/mcdonnell - scat 1 - ariola
- 13 25 **AMIGO - black slate**  
(black slate) black slate - 6059 328 - phonogram

- 14 23 **EEN BARG DIE HÉ UN KRUL IN DE STEERT, de aal**  
(v. hemert) janschen/janschens - 141 689 - cnr
- 15 18 **STOP THIS GAME - cheap trick**  
(r. zander/r. nielsen) idem - epic 9071 - cbs
- 16 19 **JE GING DE WIJDE WERELD IN - the sunstreams**  
(ad kraamer) wandersmann/hayre/etc. 141 683, cnr
- 17 21 **THE TURN OF A FRIENDLY CARD - the alan parsons project**  
(parsons)/woolfson - 102 553 - ariola
- 18 22 **WINTER - ben cramer**  
(b. m. heinz/remarc) - heinz/remarc - 18 395 - wea
- 19 24 **AGAINST THE WIND - bob seger**  
(bob seger) bob seger - 006 86149 - emi records
- 20 27 **GOTTA PULL MYSELF TOGETHER - the nolans**  
(b. findon) findon/myers/puzey - epc 8878 - cbs
- 21 28 **SAME OLD SCENE - rox music**  
(b. ferry) b. ferry - 2002 014 - polydor
- 22 30 **NOU TOT GAUW - lenny kuhr (francis goya/  
bart van der laar) kuhr/de boer - 18 417 - wea-ttr**
- 23 29 **ALWAYS LOOK ON THE BRIGHT SIDE OF LIFE - monty python**  
(iddle/chapman) idle - 17 495 - wea
- 24 - **LIES - status quo**  
(status quo/john eden) rossi/frost - 6000 577, phon.
- 25 - **STREET CAFE - john lodge**  
(pip williams) lodge - decca 13896 - phonogram
- 26 - **DO YOU FEEL MY LOVE - eddy grant**  
(eddy grant) eddy grant - 4401 - dureco
- 27 - **FLASH - queen**  
(brian may/mack) brian may - 006 64205 - emi rec.
- 28 - **LOOKING FOR CLUES - robert palmer**  
(robert palmer) robert palmer - 102 483 - ariola
- 29 - **CAPTAIN - champagne (eddy ouwens)**  
shelter/stolk/ dunhills - anr 9384 - cbs/a&r
- 30 - **THE NIGHT THE WINE AND THE ROSES - liquid gold**  
(a. baker) baker/seago - 144 793 - cnr



**Pebbles**  
Figaro

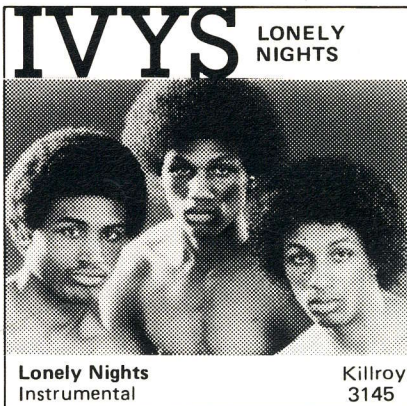
Killroy 3160



**Steve Woodley Band**  
Bitch of a woman

Killroy 3107

*Je hoeft niet  
altijd ver te zoeken  
voor goede  
DISCO-muziek*



**Lonely Nights**  
Instrumental

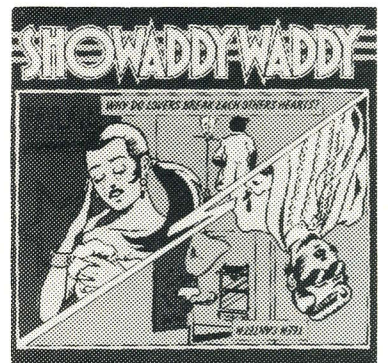
Killroy  
3145

*... en is in jouw disco  
"De Vogeltjesdans" ook  
de meest gedraaide  
discoplak van 1980?  
Op Telstar nota bene...!*



**Octopus**  
Woman

Killroy 3117



**Showaddywaddy**

Killroy 3143

Why do lovers break each others hearts?