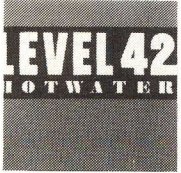


# TIP PARADE



## ALARMSCHIJF HOT WATER



- 1 **level 42**  
polydor 881 262-7
- 2 **STRONG ME STRONG - yellowman** •  
(material) - foster/laswell/beinhorn - cbs 4241 - cbs
- 3 **L.A. IS MY LADY - frank sinatra**  
(q. jones) bergman/lipton jones/sinatra - 929 223 7 - wea
- 4 **MY GIRL - herman brood & his wild romance**  
(herman brood) - s. robinson - sky 4167 - telstar
- 5 **THERE GOES MY BABY - donna summer**  
(omartian) nelson/patterson/treadwell - 259 438-7 - wea
- 6 **TOUCH BY TOUCH - diana ross**  
(ross) richie&zito&barrow&esposito - emi 006 200 1917 - emi
- 7 **DISHWASHER - general public** •  
(general public/fairley) gen. p. - virg. 106 234 - virgin/ar.
- 8 **STANDING IN THE TWILIGHT - maywood**  
(p. koopman) a. may - philips 880 208-7 - phonogam
- 9 **I'LL FLY FOR YOU - spandau ballet**  
(swain/jolly/sp. ball.) sp. ball./kemp - chrys. 106.806 - ar.
- 10 **WHAT'S LOVE GOT TO DO WITH IT - tina turner**  
(britten/lyle) britten - capitol 2001917 - emi
- 11 **REGGAE TE GEK Hé - arie ribbens**  
(jur eckhardt)/bemboom/bloemsma - 881 161 7 - polydor
- 12 **LIGHT OF A GIPSY - pussycat**  
(pirh koopman) - w. theunissen - ariola 106 669 - ariola

DE SCHIJVEN: 27-8 AVRO R/TV TIP - nummer 15 in de tipparade  
 27-8 STEUNPLAAT - desir-desir - janot & voutzy - rca 61402  
 30-8 TROS PARADEPLAAT - nummer 25 in de tipparade

- 13 **CLOSEST THING TO HEAVEN - the kane gang** •  
(pete wingfield) brammer/brewis - london 882 0007 - phon.
- 14 **'T PAPAGAAJE LIED - tineke schouten**  
(bert schouten) lookers/t. schouten - cnr 142 104 - cnr
- 15 **TRICK OF THE EYE - dolly dots**  
(r. de bois/p. v. asten) idem - ariola 106 814 - ariola
- 16 **BESOS DE TI A MI - blanc de blanc** •  
(f. jansen) g. elias - boni 84050 - boni records
- 17 **IN THE HEART - kool and the gang**  
(bell/bonnefond/kool) bell/taylor/e.a. - del.rec. 101972 - vip
- 18 **STRAND - de neus**  
(cees schrama) barendrecht/v.d. tier - 881 123 7 - polydor
- 19 **CAMELS HERE CAMELS THERE - pavlow**  
(v. es/kommers)/bax - cnr 142.115 - cnr
- 20 **WAITING IN VAIN - bob marley** •  
(bob marley) idem - island 106 637 - ariola
- 21 **SHINE SHINE - barry gibb**  
(b. gibb/richardson) e.a. - polydor 881 197-7 - polydor
- 22 **MASTER AND SARVANT - depeche mode**  
(d. miller) m. gore - mute 101.980 - vip
- 23 **EVERYBODY ON THE FLOOR - sherman brothers**  
(tyn & fluitsma) fluitsma/tyn & conard - 880 166-7 - phon.
- 24 **BROKEN GLASS - vanessa**  
(steve glen)/m. burns - dureco 4926 - dureco
- 25 **MAKE ME CRY - roberto jacketti & scooters**  
(mulder/groothuizen) e. v.d. hoff - carrere 221.034 - cnr
- 26 **ON THE WINGS OF A NIGHTINGALE - everly bros**  
(edmunds) p. mccartney - mercury 880 213 - phonogram
- 27 **DRIVE - the cars**  
(r. john/m. lange/cars) r. ocasek - elektra 969 706 - wea
- 28 **SHE BOP - cyndi lauper** •  
(chertoff) lauper/lunt/corbett/chertoff - epic 4620 - cbs
- 29 **WHOSE SIDE ARE YOU ON - matt bianco**  
(p. collins) reilly/white - wea 249 319 - wea
- 30 **COME BACK - the mighty wah**  
(p. wylle) pete wylle - channel 45-24 - ars rec.

31-8 NCRV FAVORIET - nummer 23 in de tipparade  
 31-8 VERONICA ALARMSCHIJF - nummer 1 in de tipparade

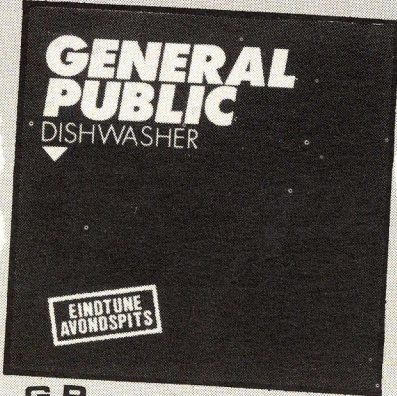
# 3x ANDERS

HEAVEN  
17



Distributed by the Ariola Group of Companies

# 3x

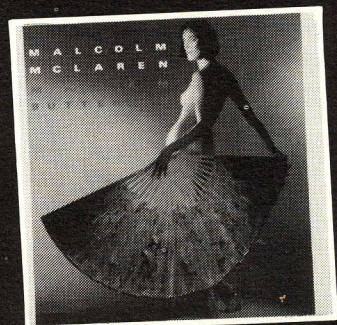


EINDTONE  
AVONDSPITS

GENERAL  
PUBLIC

# GO

▶ **LOOK OP  
12  
INCH**



MALCOLM  
MCLAREN

# GOED!

▶ *Virgin*