

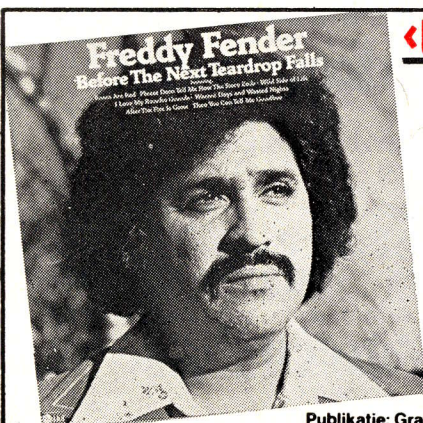


# de nederlandse top 40

DE NEDERLANDSE TOP 40 IS SAMENGESTELD DOOR DE STICHTING NEDERLANDSE TOP 40 UIT GEGEVENS VAN HANDEL EN INDUSTRIE

deze week	vorige week	Titel - Artist - (Producer) - Componist Label & bestelnummer - Distributiemij	aantal weken	deze week	vorige week	Titel - Artist - (Producer) - Componist Label & bestelnummer - Distributiemij	aantal weken
1	2	<b>THE ELEPHANT SONG - kamahl</b> (h. van hemert) v. hemert/frenkel/frank/woddis - ph. 6037058, phon.	4	21	29	<b>IF YOU THINK YOU KNOW HOW TO LOVE ME - smokey</b> - rak 5c006-96685 - bovema	2
2	1	<b>STAND BY YOUR MAN - tammy wynette</b> (sherill) sherill/wynette - epc 7137 - cbs	7	22	-	<b>TEARS ON MY PILLOW - johny nash</b> (nash/khoury) smith - cbs 3220 - cbs	1
3	5	<b>RAMAYA - afric simone</b> (j. schmeier) a. simone/st. regal - cnr 144.493 - cnr	5	23	15	<b>I'M NOT IN LOVE - 10 cc</b> (10 cc) - g. gouldman/e. stewart - mercury 6008.014 - phon.	8
4	3	<b>DOLANNES MELODIE - paul de seneville</b> (delphine) de seneville/toussaint/roy, 36.262 - dur.	5	24	-	<b>SLOW DOWN - shabby tiger</b> (ben findon) findon/wilkins - ng 651 - negram	1
5	7	<b>ONE OF THESE NIGHTS - eagles</b> (szymczyk) henley/frey - as 13020 - wea	3	25	28	<b>HARMOUR LOVE - syreeta</b> (stevie wonder) stevie wonder - tm 5c 006 96748 - bovema	4
6	10	<b>ROLL OVER LAY DOWN - status quo</b> (rossi) young/lancaster/parfitt/coghlan, vert. 6059.123, ph.	4	26	22	<b>AUTOBAHN - kraftwerk</b> (kraftwerk) hütter/schneider - philips aa 6003.438 - phonogram	6
7	4	<b>IF YOU GO - barry &amp; eileen</b> (r. uytendaele) j. colsten/a. barrière - omega 110/36.246x - dureco	10	27	-	<b>JIVE TALKING - beegees</b> (arif mardin) b. r. & m. gibb - rso 2090160, polydor	1
8	8	<b>FOE DEE OH DEE - rubettes</b> (bickerton/waddingt.) bickerton/waddington - state 208 8007 - polydor	4	28	-	<b>EIGHTEEN WITH A BULLIT - pete wingfield</b> (wingfield/hammond) wingfield - is 16 135 at, ariola	1
9	16	<b>SEVENTY FIVE - limousine</b> (martin duiser) huysdens/sell - ariola 16079 at - ariola	4	29	24	<b>SENDING OUT AN S.O.S. - retta young</b> (a. good-man/ray/morris) lenier/landon - ph. 6146405 - phon	3
10	19	<b>ACTION - sweet</b> (sweet) scott/tucker/conolly/priest - rca 2578 - inelco	3	30	31	<b>THANK GOD, I'M A COUNTRY BOY - john denver</b> (m. okuhn) sommers - rca pb 10.239 - inelco	2
11	6	<b>BEFORE THE NEXT TEARDROP FALLS - fr. fender</b> (meaux) keith/peters - dot doa 17540 - negram	6	31	-	<b>L'ETE INDIEN (africa) - joe dassin</b> (jaques plait) ward/pallavicini - cbs 3404 - cbs	1
12	13	<b>SEVEN-ELEVEN - catapult</b> (eggermont) mol/v. prehn/hessing/gimmik/bergman - 2050.367 polyd.	4	32	20	<b>LONG HOT SUMMER - galaxy-lin</b> (r. van leeuwen) r. van leeuwen - 2050.364 - pol.	5
13	17	<b>ACH, HEINRICH - emily &amp; tom</b> (hendrik) hendrik/dries/v. haaren at 16.031, dureco	3	33	32	<b>OH' MONAH, nat conella with ted easton jazzband10</b> (t. weems/j. washburne) - cnr 141.294 - cnr	1
14	23	<b>SANDY - hollies</b> (ron richards) bruce springsteen - 2 polydor 2058595 - polydor	2	34	-	<b>'T WAS AAN DE COSTA DEL SOL - zangeres zander naam</b> (hoes) hoes - telstar ts 2121 tf - telstar	1
15	25	<b>TU T'EN VAS - alain barrière</b> (barrière) barrière - albatros alb. 10.118 - inelco	2	35	30	<b>TAKE YOUR MAMA FOR A RIDE - lulu</b> (wes farrell) k. nolan - chelsea 2005.022 - polydor	8
16	9	<b>S.O.S. - abba</b> (b. andersson) s. anderson b. ulvaeus - polydor 2001.585 - polydor	8	36	33	<b>NOTHING ELSE TO DO - maggie macneal</b> (de bois) smit/bewley/smit - wb 16581 - wea	5
17	11	<b>DON'T CALL US, WE'LL CALL YOU - sugarloaf/ jerry corbetta</b> (slay) corbetta/carter 2001.584, pol.	5	37	27	<b>FEELINGS - morris albert</b> (morris albert) - vogue 12066 - vip	6
18	14	<b>ZOMERTIJD - vader abraham en mieke</b> (kartner) kartner - elf prov. elf 69.93- dureco	4	38	26	<b>DIE SCHWARZE BARBARA - heino</b> mahr/jung/schatz - emi 5c 006.31331 - bovema	5
19	21	<b>HASIBABA - johny &amp; orquesta rodrigues</b> (p. tetteroo) rodrigues - negram ng 2022 - negram	3	39	34	<b>DISCO SHIRLEY - shirley &amp; company</b> j. alvarez/m. burton - philips 6146.408 - phonogram	6
20	12	<b>VINO - imca marina</b> (klaas leyen) t. santagata/möring - emi 5c 006.25.300 - bovema	8	40	18	<b>MOONSHINE SALLY - mud</b> (chapmann/chinn) knox - rak 5c 006.96691 - bov.	6

UITZENDING OP TROS RADIO HILVERSUM III DONDERDAG VAN 4 TOT 6 UUR (FERRY MAAT)



**<WASTED DAYS AND WASTED NIGHTS>**  
 geweldige nieuwe hitsingle van  
**Freddy Fender**  
 samen met o.a. zijn grote hit  
**<BEFORE THE NEXT TEARDROP FALLS>**  
 ook op elpee **SINGLE • NG-659**  
**LP • DOSD • 2020**  
 Publikatie: Gramofoonplatenmij NEGRAM b.v., Heemstede, tel. 023-280750